

Intradermal Nevus, combined type with mild atypia

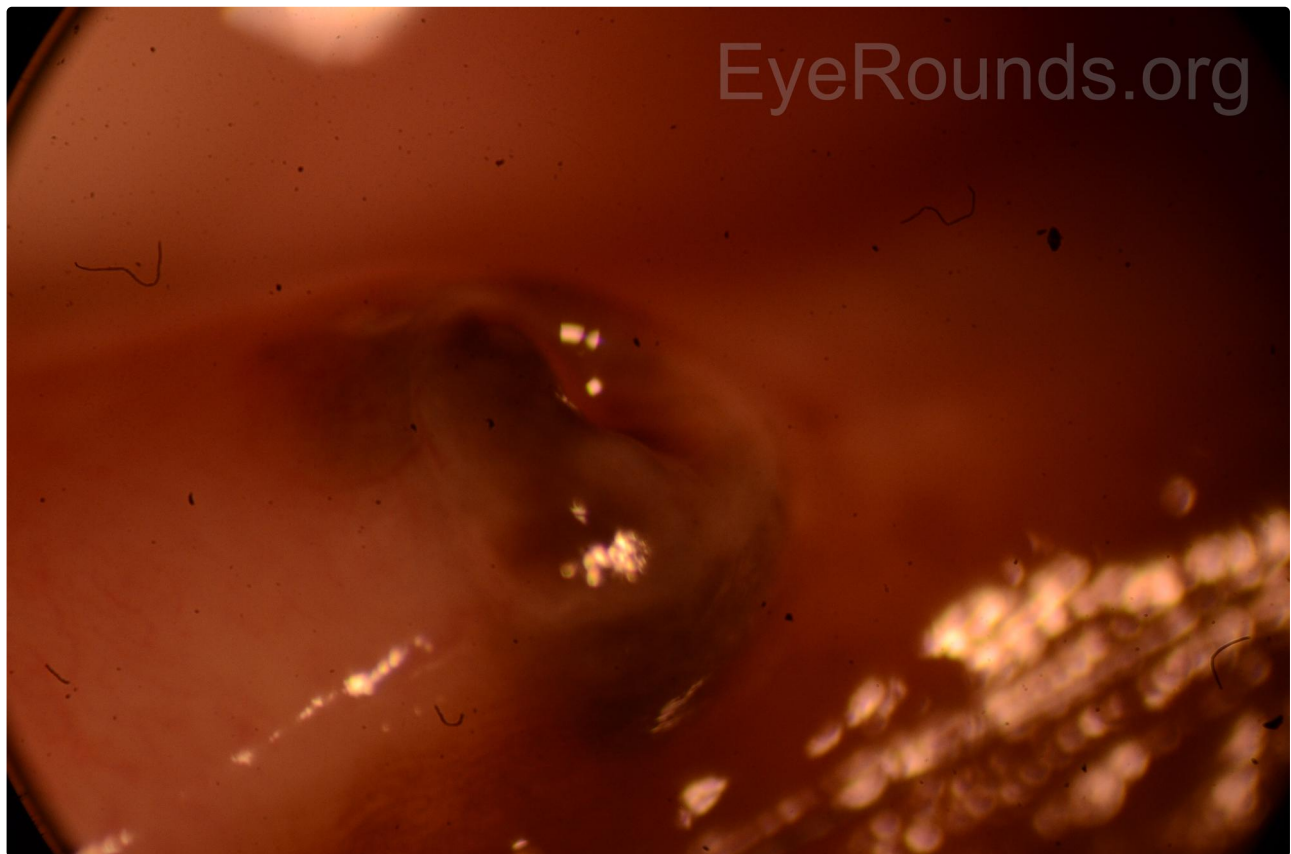
Category(ies): Cornea

Contributor: [Tressa Larson OD FAAO](#)

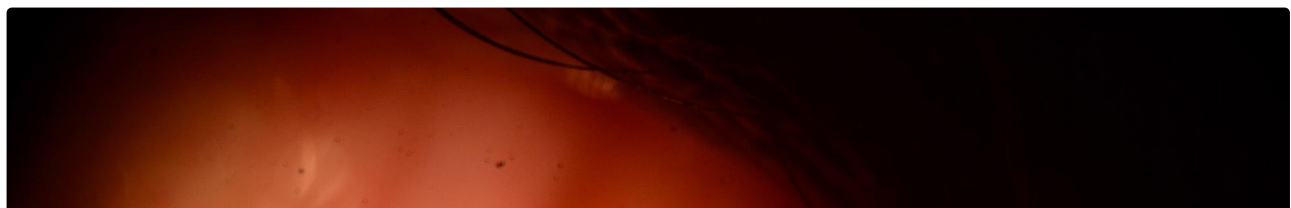
Photographer: Tressa Larson OD FAAO

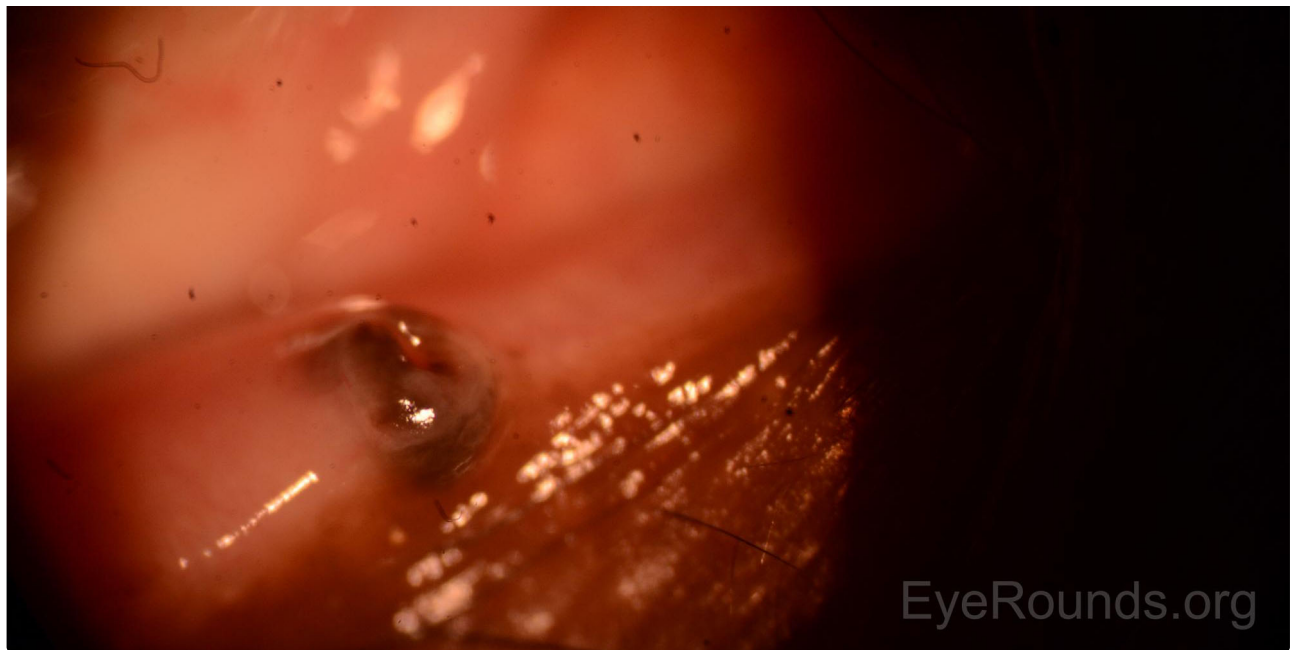


Abnormal puncta was noted on annual eye exam. Patient had not noticed it nor had her prior eye care provider mentioned it to her. Upon evaluation by oculoplastics, photos and six month recall was recommended, but the patient preferred incisional biopsy to rule out malignancy. The pathologist noted some club-like elongation of the rete ridges with pigmentation in the basal layers of the epidermis. Final diagnosis was intradermal nevus, combined type with mild atypia and patient was advised to have occasional follow up with photos.

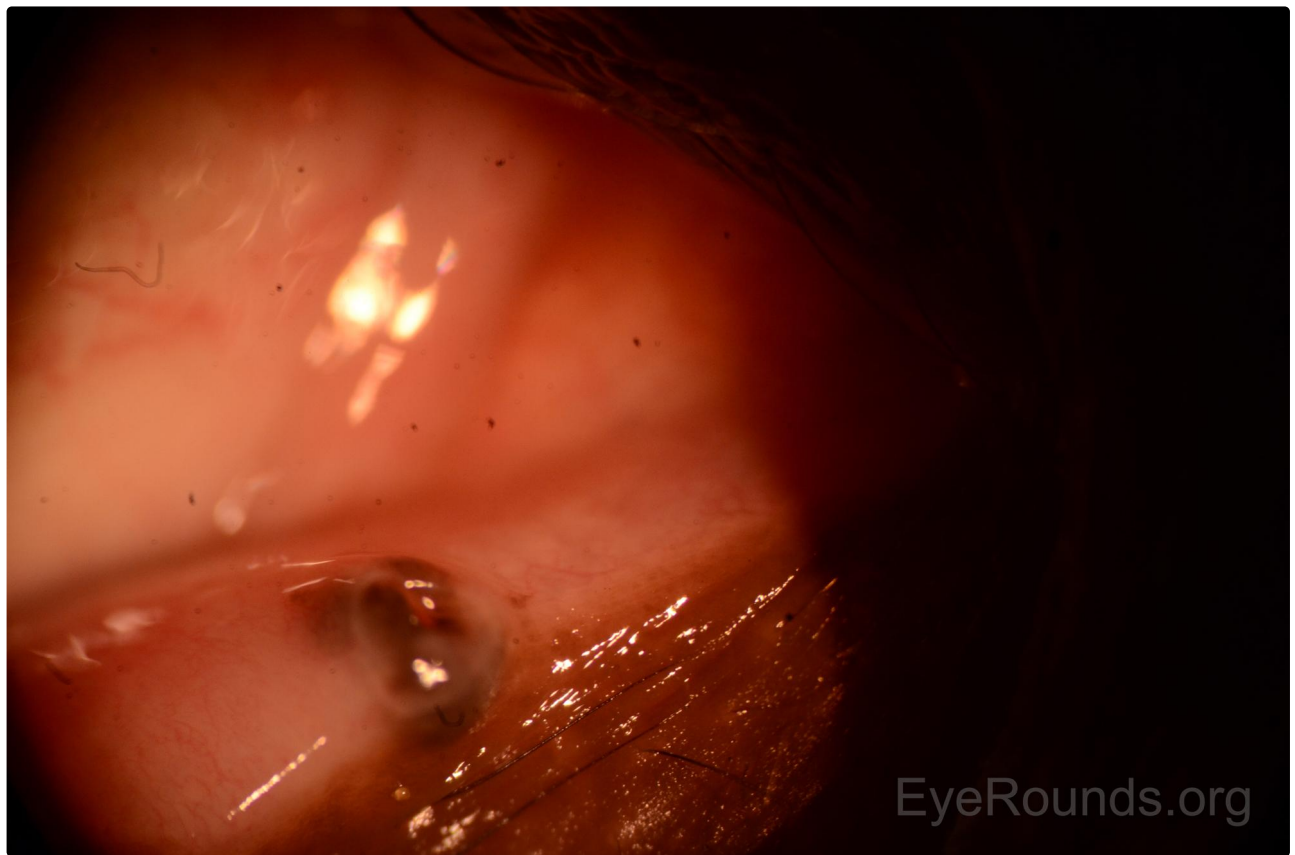


[Enlarge](#) [Download](#)

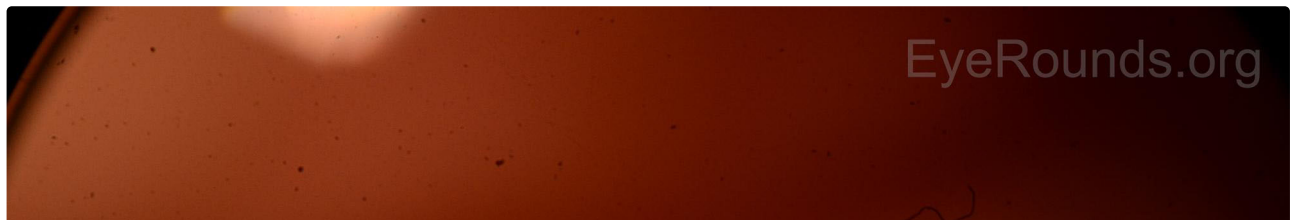


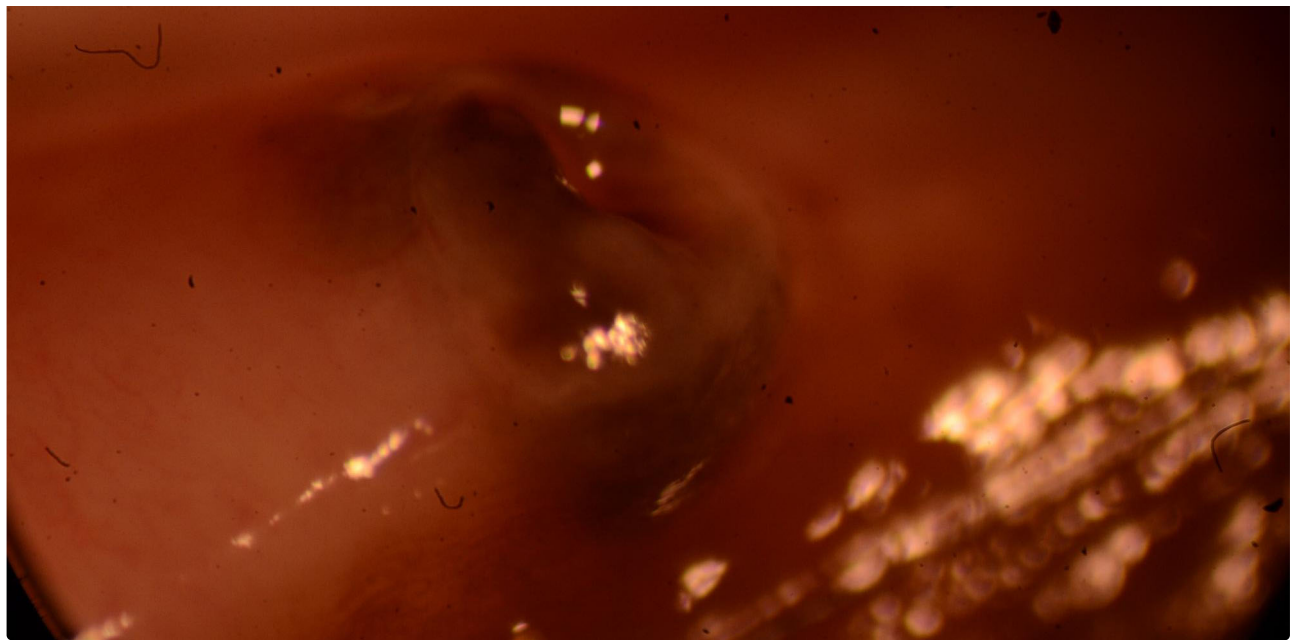


[🔍 Enlarge](#) [📄 Download](#)



[🔍 Enlarge](#) [📄 Download](#)





[Enlarge](#) [Download](#)

Image Permissions:



Ophthalmic Atlas Images by EyeRounds.org, The University of Iowa are licensed under a [Creative Commons Attribution-NonCommercial-NoDerivs 3.0 Unported License](https://creativecommons.org/licenses/by-nc-nd/3.0/).

Address

University of Iowa
Roy J. and Lucille A. Carver College
of Medicine
Department of Ophthalmology and
Visual Sciences
200 Hawkins Drive
Iowa City, IA 52242

[Support Us](#)

Legal

Copyright © 2019 The University of
Iowa. All Rights Reserved
[Report an issue with this page](#)
[Web Privacy Policy](#) |
[Nondiscrimination Statement](#)

Related Links

[Cataract Surgery for Greenhorns](#)
[EyeTransillumination](#)
Gonioscopy.org
[Iowa Glaucoma Curriculum](#)
[Iowa Wet Lab](#)
[Patient Information](#)
[Stone Rounds](#)
[The Best Hits Bookshelf](#)

EyeRounds Social Media

Follow



Receive notification of new cases,
[sign up here](#)
[Contact Us](#)
[Submit a Suggestion](#)